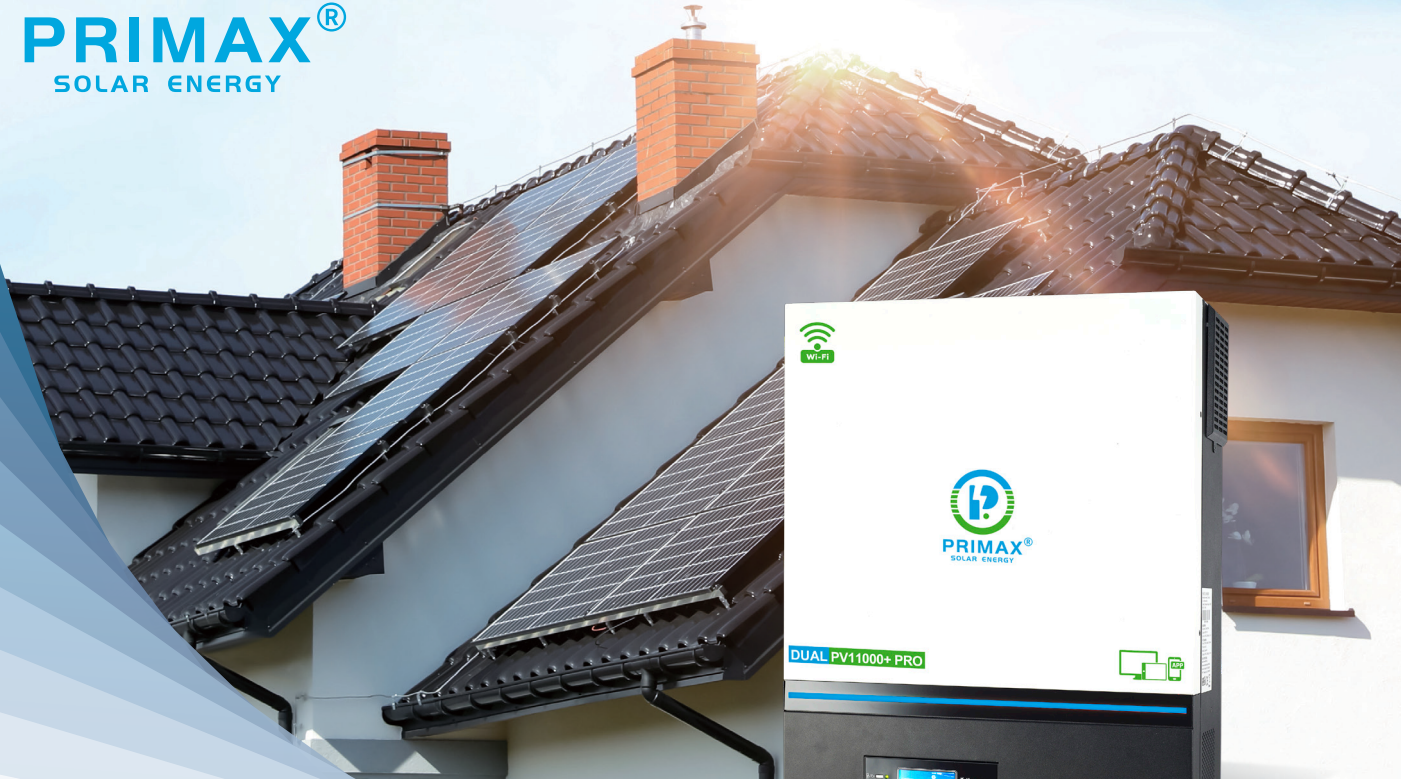


SOLAR CAPACITY **11000W**



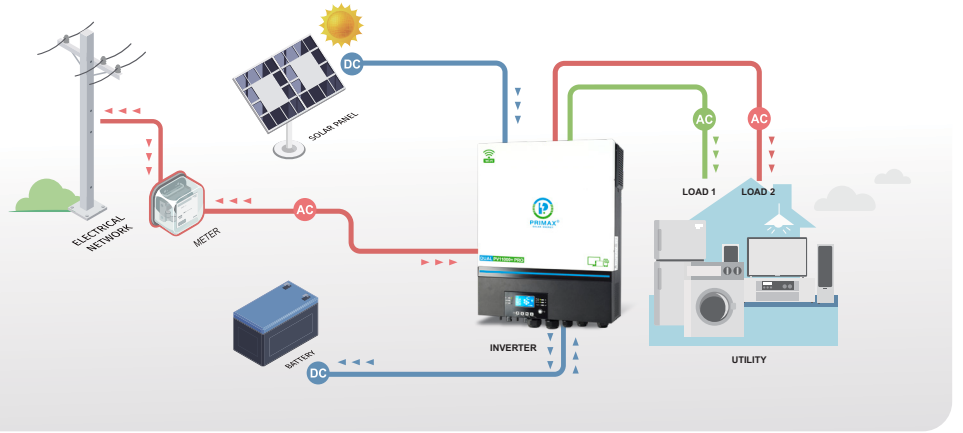
# GALAXY DUAL PV 11000+ PRO

## MPPT Solar Inverter

### FEATURES :

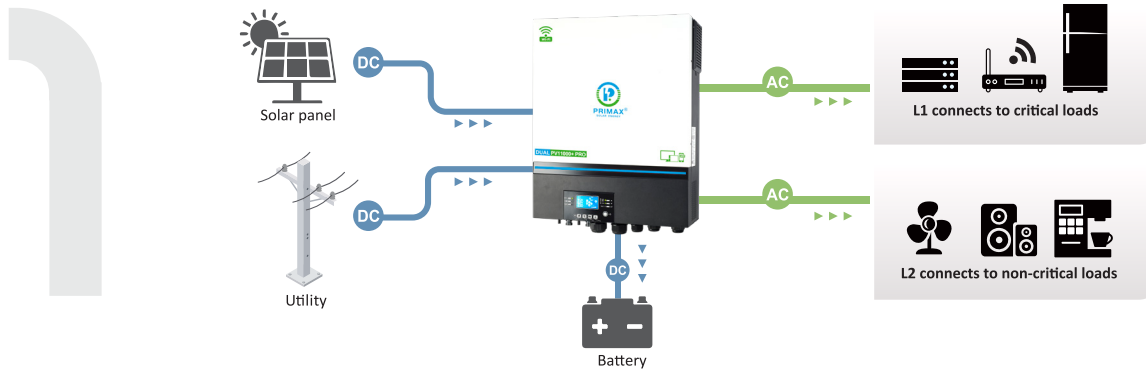
- Dual outputs, for smart load management
- Maximum PV input current 27A x 2 (Max 40A)
- Wide PV input voltage range 90VDC ~ 450VDC
- Status indication with RGB lights
- Built-in Wi-Fi for mobile monitoring (Android/iOS App is available)
- Supports USB On-the-Go function
- Reserved communication port for BMS (RS485, CAN-BUS or RS232)
- Maximum charging current 120A
- Battery independent design
- Feed-in to the grid with storage backup
- Compatible to Utility Mains or generator input
- Built-in anti-dust kit
- Parallel operation with 6 units
- Maximum AC Output 8000W



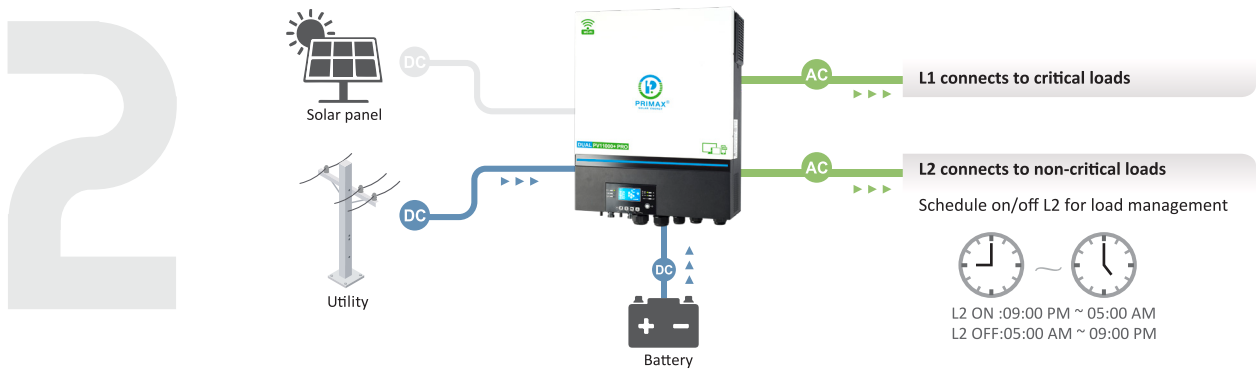


### Dual Output Operation

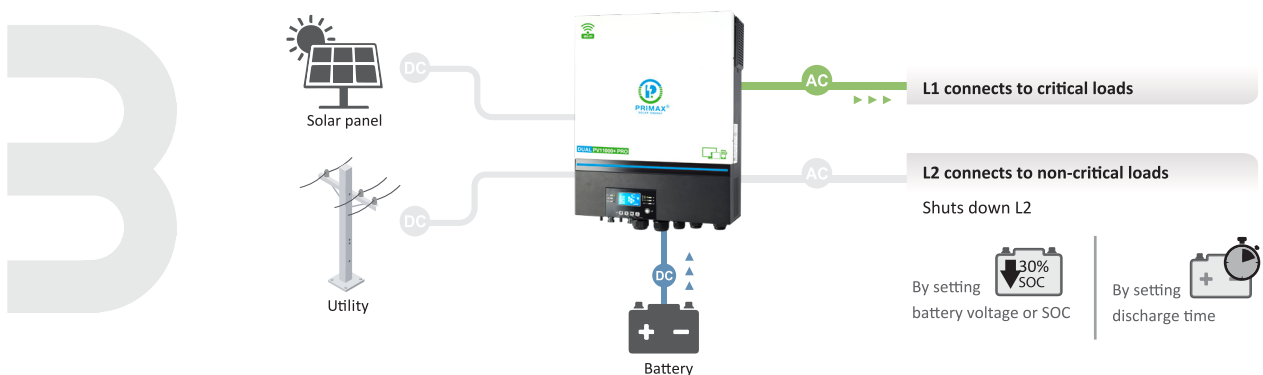
When PV energy and Utility are available and sufficient



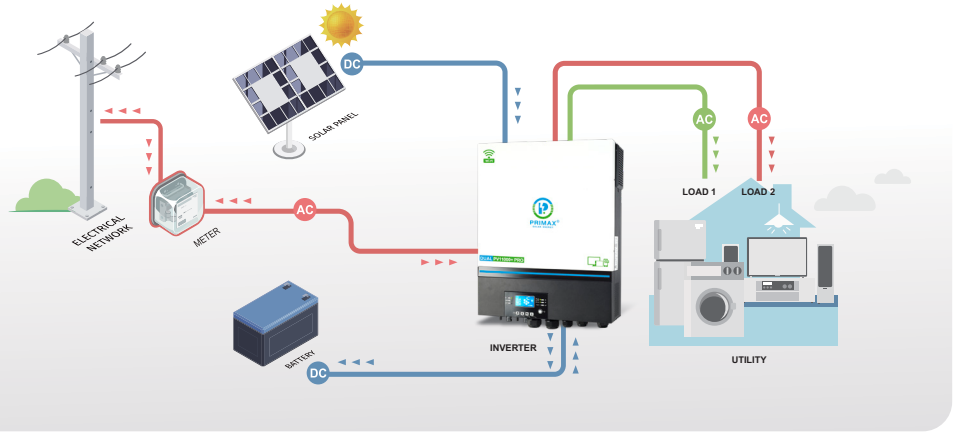
No PV energy is available.



Only battery energy provides power to the loads.



# MPPT Solar Inverter | 8000 Watt



<b>MODEL</b>	<b>GALAXY DUAL PV11000+ PRO</b>
<b>RATED POWER</b>	8000VA/8000W
<b>PHASE</b>	1-phase in / 1- phase out
<b>INPUT</b>	
Voltage	230 VAC
Selectable Voltage Range	170-280 VAC (For Personal Computers) ; 90-280 VAC (For Home Appliances)
Frequency Range	50 Hz/60 Hz (Auto sensing)
<b>OUTPUT</b>	
AC Voltage Regulation (Batt. Mode)	230VAC $\pm$ 5%
Surge Power	16000VA
Efficiency (Peak)	93%
Transfer Time	10 ms (For Personal Computers) 20 ms (For Home Appliances)
Waveform	Pure sine wave
<b>BATTERY</b>	
Battery Voltage	48 VDC
Floating Charge Voltage	54 VDC
Overcharge Protection	66 VDC
<b>SOLAR CHARGER &amp; AC CHARGER</b>	
Solar Charger type	MPPT
Maximum PV Array Power	11000W (5500W x 2)
MPP Range @ Operating Voltage	90 ~ 450 VDC
Maximum PV Array Open Circuit Voltage	500 VDC
Maximum PV Input Current	27A x 2 (MAX 40A)
Maximum Solar Charge Current	120A
Maximum AC Charge Current	120A
Maximum Charge Current	120A
<b>PHYSICAL</b>	
Dimension, D x W x H (mm)	147.4 x 432.5 x 553.6
Net Weight (kgs)	18.4
Communication Interface	USB/RS232/RS485/WiFi/Dry-contact
<b>OPERATING ENVIRONMENT</b>	
Humidity	5% to 95% Relative Humidity (Non-condensing)
Operating Temperature	-10°C to 50°C
Storage Temperature	-15°C to 60°C
<b>STANDARD</b>	
Compliance Safety	CE

Product specifications are subject to change without further notice.