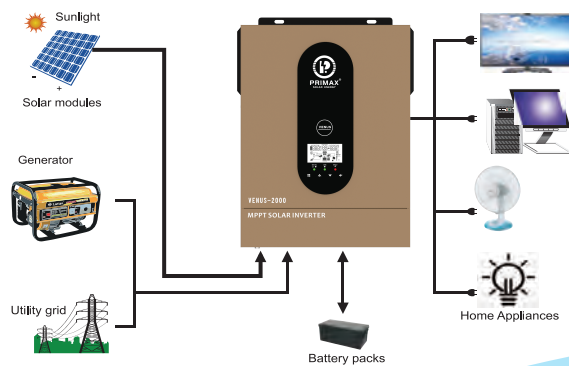




- Max. Efficiency 98%
- 80A MPPT
- IP21 Ingress Protection
- APP
- RS232/GPRS WIFI
- LCD Display

## Features

- Pure sine wave solar inverter
- Wifi&GPRS available for IOS and android (Optional)
- Built-in 80A MPPT solar charger
- High PV input voltage range( 30~400VDC )
- Built-in anti-dust kit for harsh environment
- Smart battery charge design to optimize battery life
- meet rich customized demands
- Compatible with lithium battery
- Solar energy is provided directly to the load first



Model	VENUS-2000
RATED POWER	2000VA/1600W
<b>AC Input</b>	
Voltage	230VAC
Selectable Voltage Range	170~280VAC(For Personal Computers) 90~280VAC(For Home Appliances)
Frequency Range	50 Hz/60Hz(Auto sensing)
<b>AC OUTPUT</b>	
AC Voltage Regulation	230VAC±5%
Surge Power	4000VA
Efficiency(Peak)PV to INV	98%
Efficiency(Peak)Battery to INV	94%
Transfer Time	10 ms (For Personal Computers);20 ms (For Home Appliances)
<b>BATTERY</b>	
Battery Voltage	12VDC
Floating Charge Voltage	13.5VDC
Overcharge Protection	16VDC
<b>SOLAR CHARGER &amp; AC CHARGER</b>	
Solar Charger Type	MPPT
Maximum PV Array Power	2000W
MPPT Range @ Operating Voltage	30~400VDC
Maximum PV Array Open Circuit Voltage solar	400VDC
Max Input Current	1/13A
Maximum Solar Charge Current	80A
Maximum AC Charge Current	60A
Maximum Charging Current (Solar+AC)	80A
<b>PHYSICAL</b>	
Dimension,D*W*H(mm)	357*273*95
Carton Dimension,D X W XH(mm)	440*340*170
Net Weight(kgs)	5
Gross Weight(kgs)	6
Communication interface	RS232/GPRS/WIFI
<b>ENVIRONMENT</b>	
Humidity	5% to 95% Relative Humidity(Non ~ condensing)
Operating Temperature	-10°C ~ 50°C
<b>STANDARD</b>	
Compliance Safety	CE